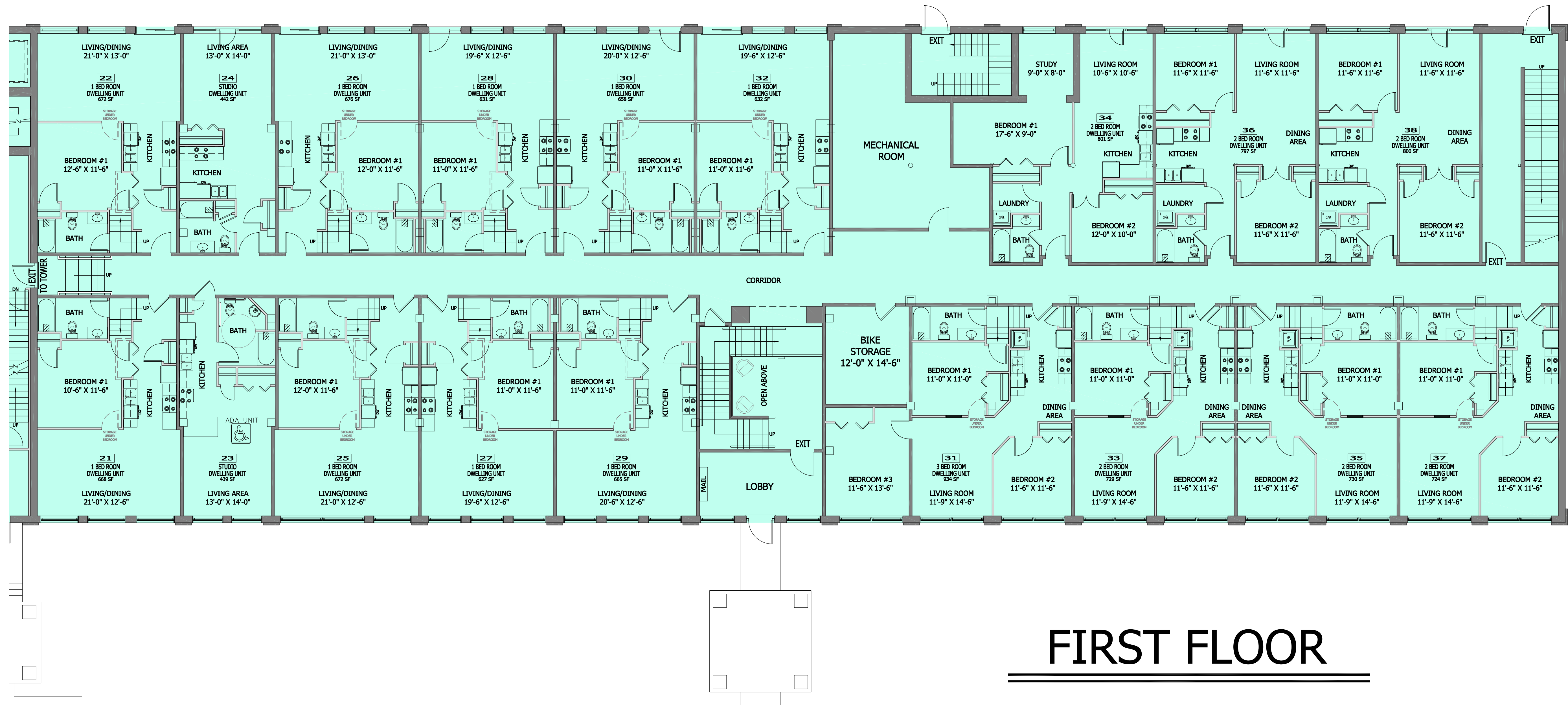


PLANS ARE FOR MARKETING PURPOSES  
 SUBJECT TO CHANGE WITHOUT NOTICE  
 ROOM SIZES & SQUARE FOOT  
 CALCULATIONS ARE APPROXIMATE

US-1 BYPASS VIEW



**FIRST FLOOR**

ISLINGTON ST. VIEW



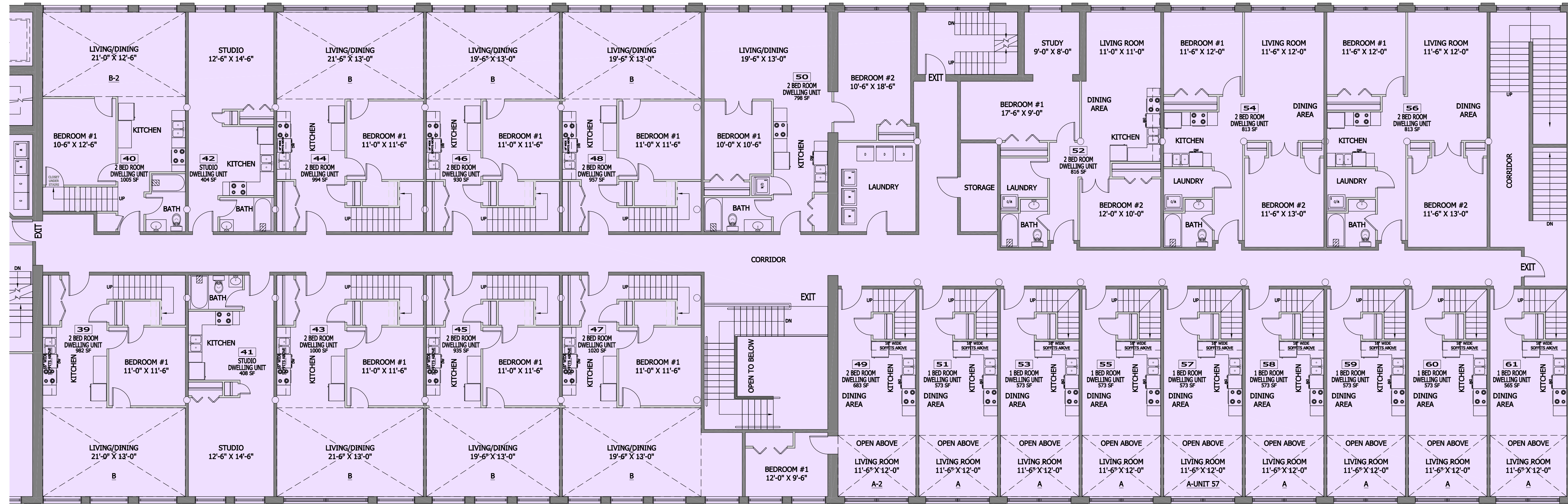
**Millport**

1001 ISLINGTON ST.  
 PORTSMOUTH, NH 03801



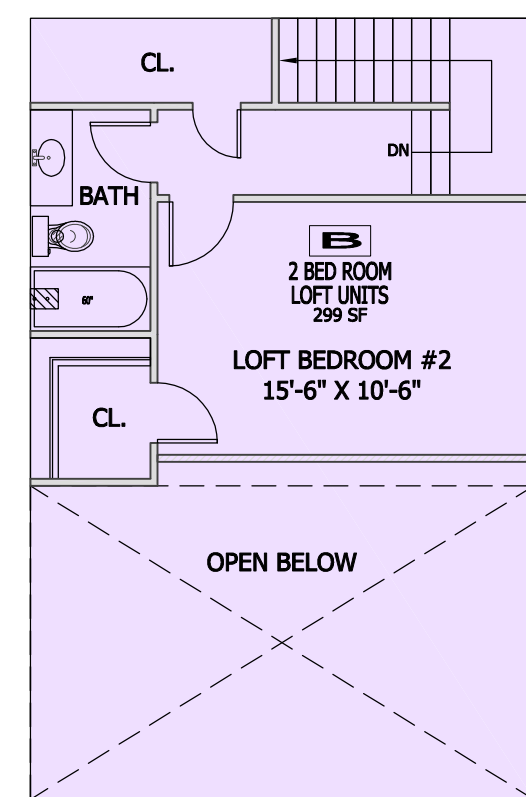
PLANS ARE FOR MARKETING PURPOSES  
 SUBJECT TO CHANGE WITHOUT NOTICE  
 ROOM SIZES & SQUARE FOOT  
 CALCULATIONS ARE APPROXIMATE

US-1 BYPASS VIEW

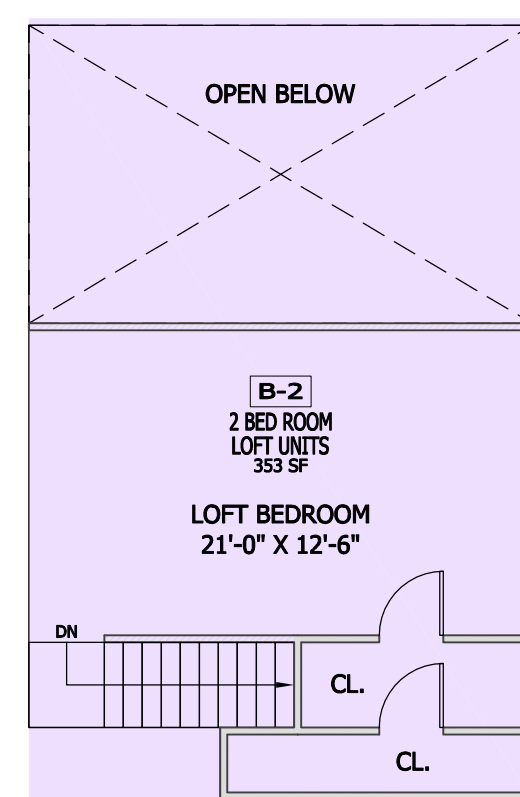


ISLINGTON ST. VIEW

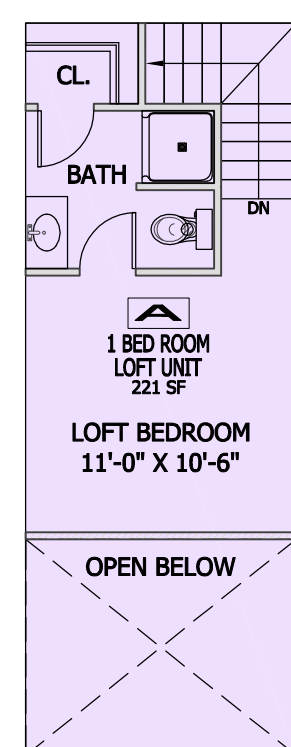
**SECOND FLOOR**



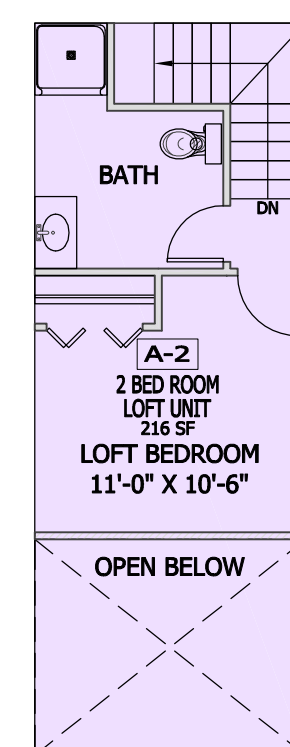
B  
SECOND FLOOR



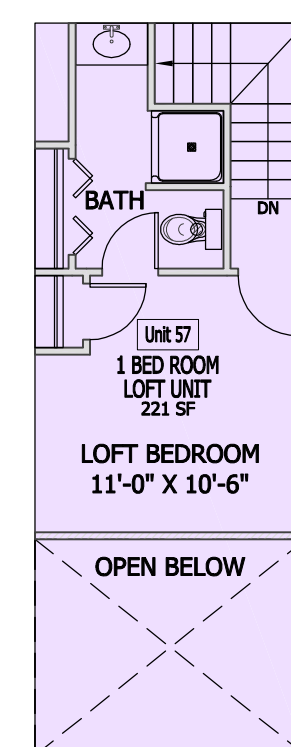
B-2  
SECOND FLOOR



A  
SECOND FLOOR



A-2  
SECOND FLOOR



A-UNIT 57  
SECOND FLOOR



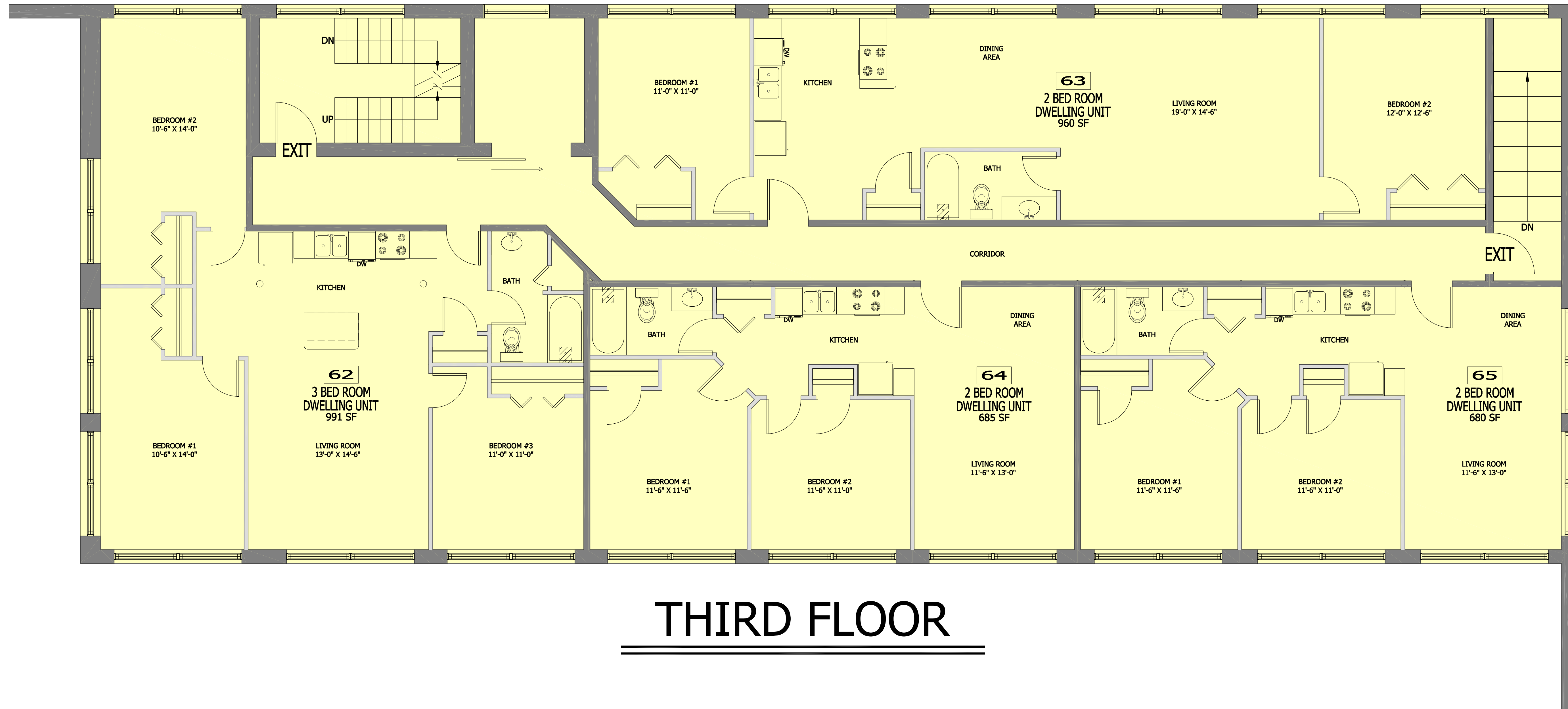
**Millport**

1001 ISLINGTON ST.  
 PORTSMOUTH, NH 03801



PLANS ARE FOR MARKETING PURPOSES  
SUBJECT TO CHANGE WITHOUT NOTICE  
ROOM SIZES & SQUARE FOOT  
CALCULATIONS ARE APPROXIMATE

US-1 BYPASS VIEW



## THIRD FLOOR

ISLINGTON ST. VIEW



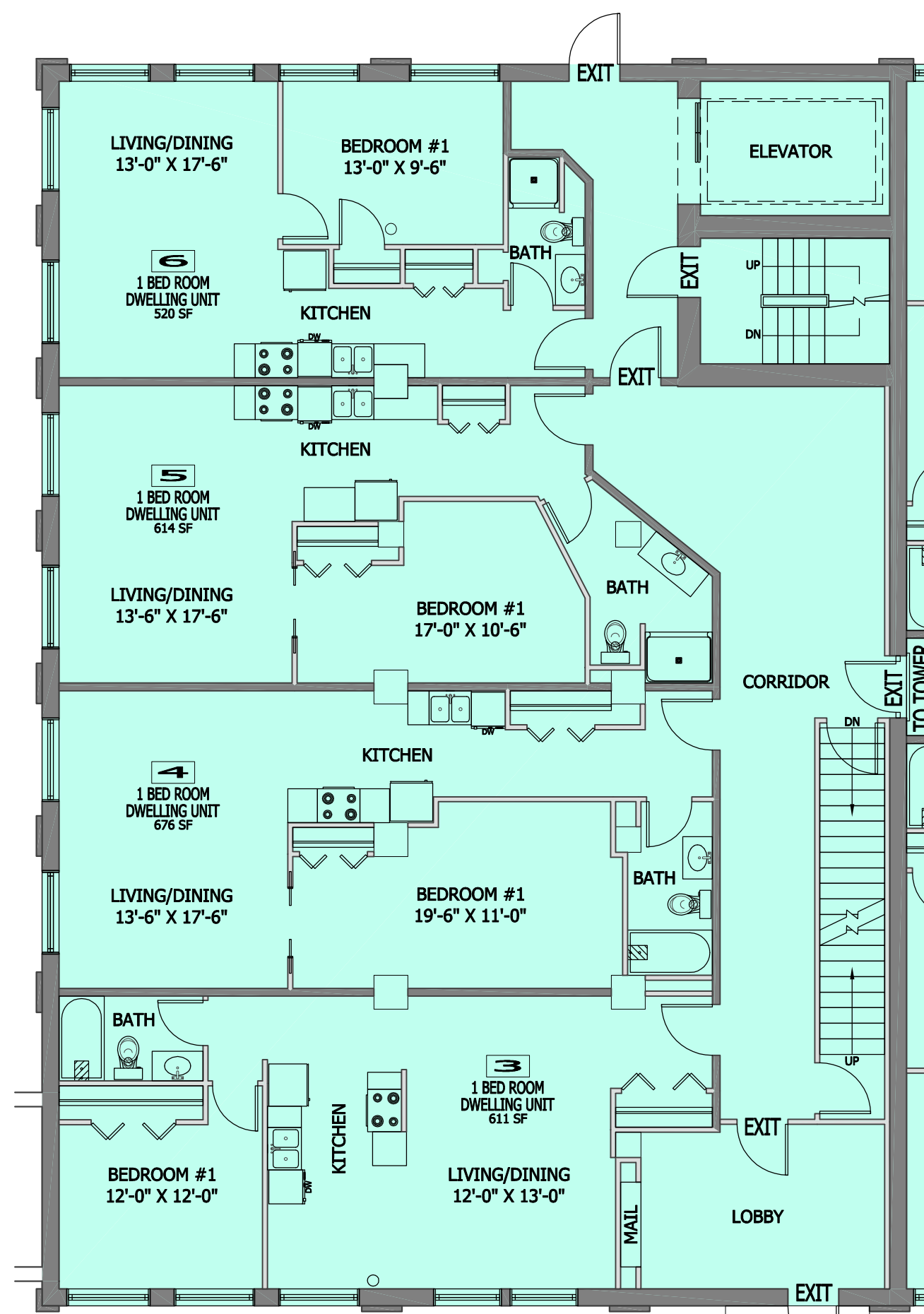
# Millport

1001 ISLINGTON ST.  
PORTSMOUTH, NH 03801

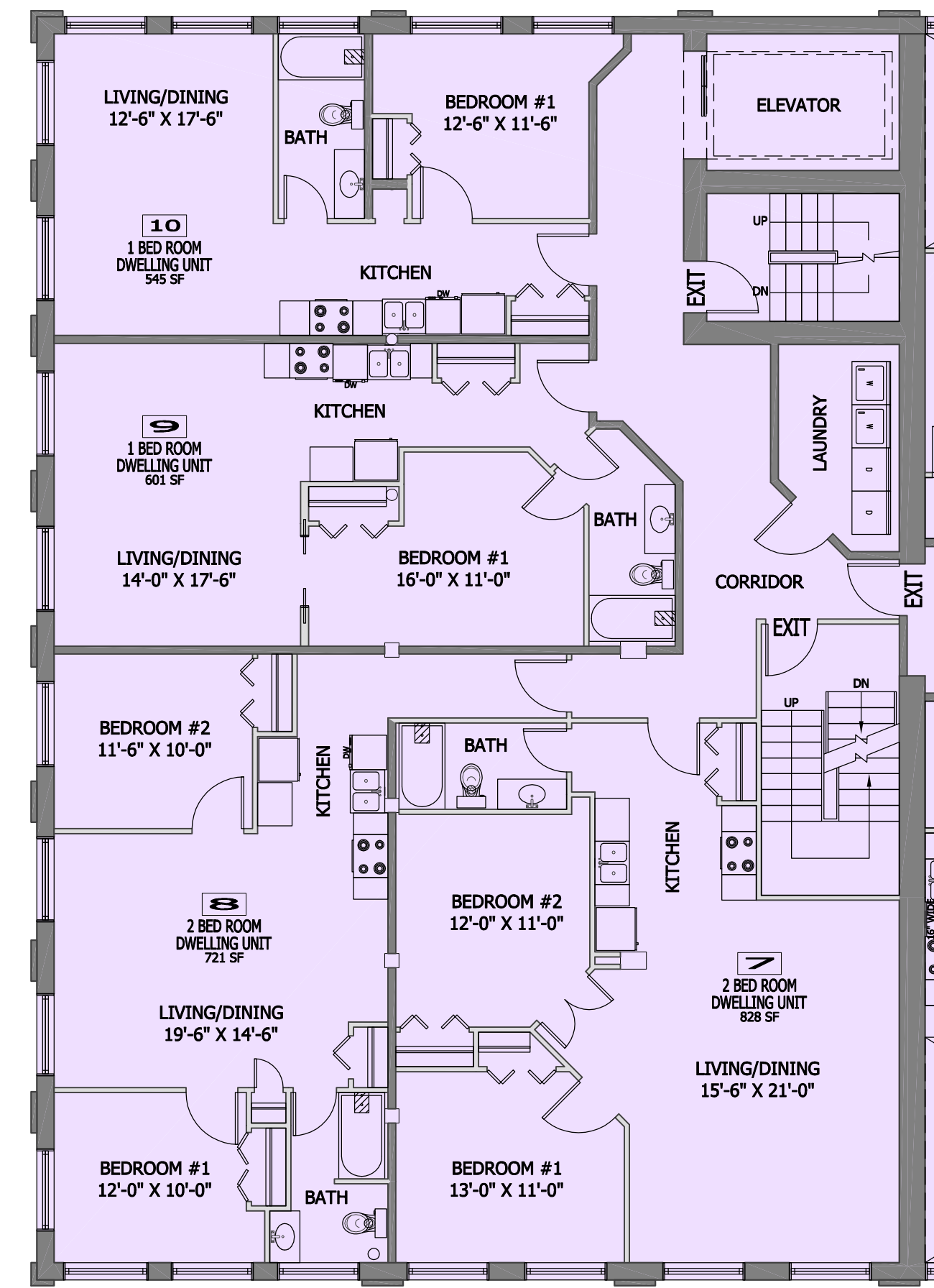


PLANS ARE FOR MARKETING PURPOSES  
SUBJECT TO CHANGE WITHOUT NOTICE  
ROOM SIZES & SQUARE FOOT  
CALCULATIONS ARE APPROXIMATE

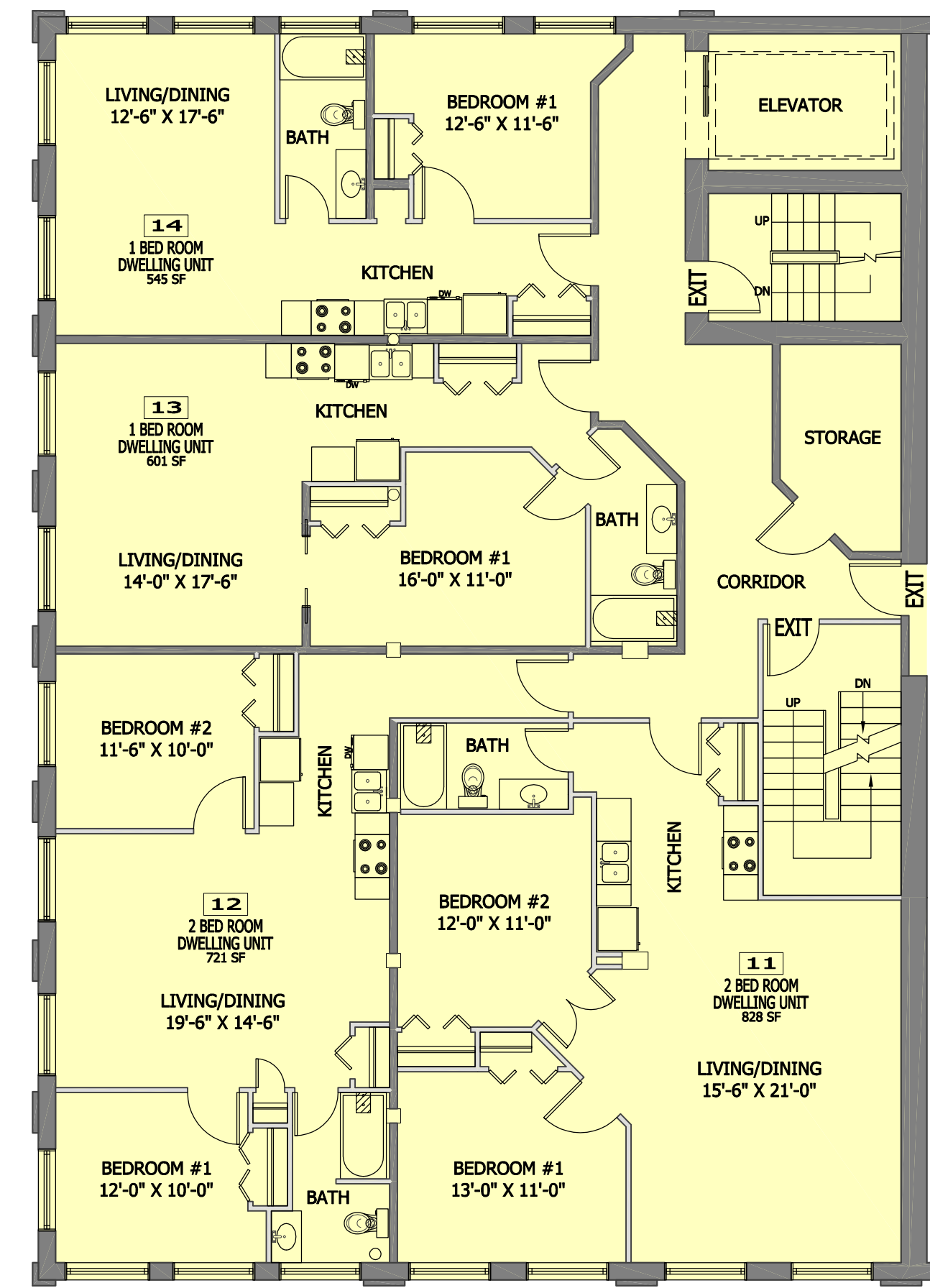
# TOWER FLOOR PLANS 1-5



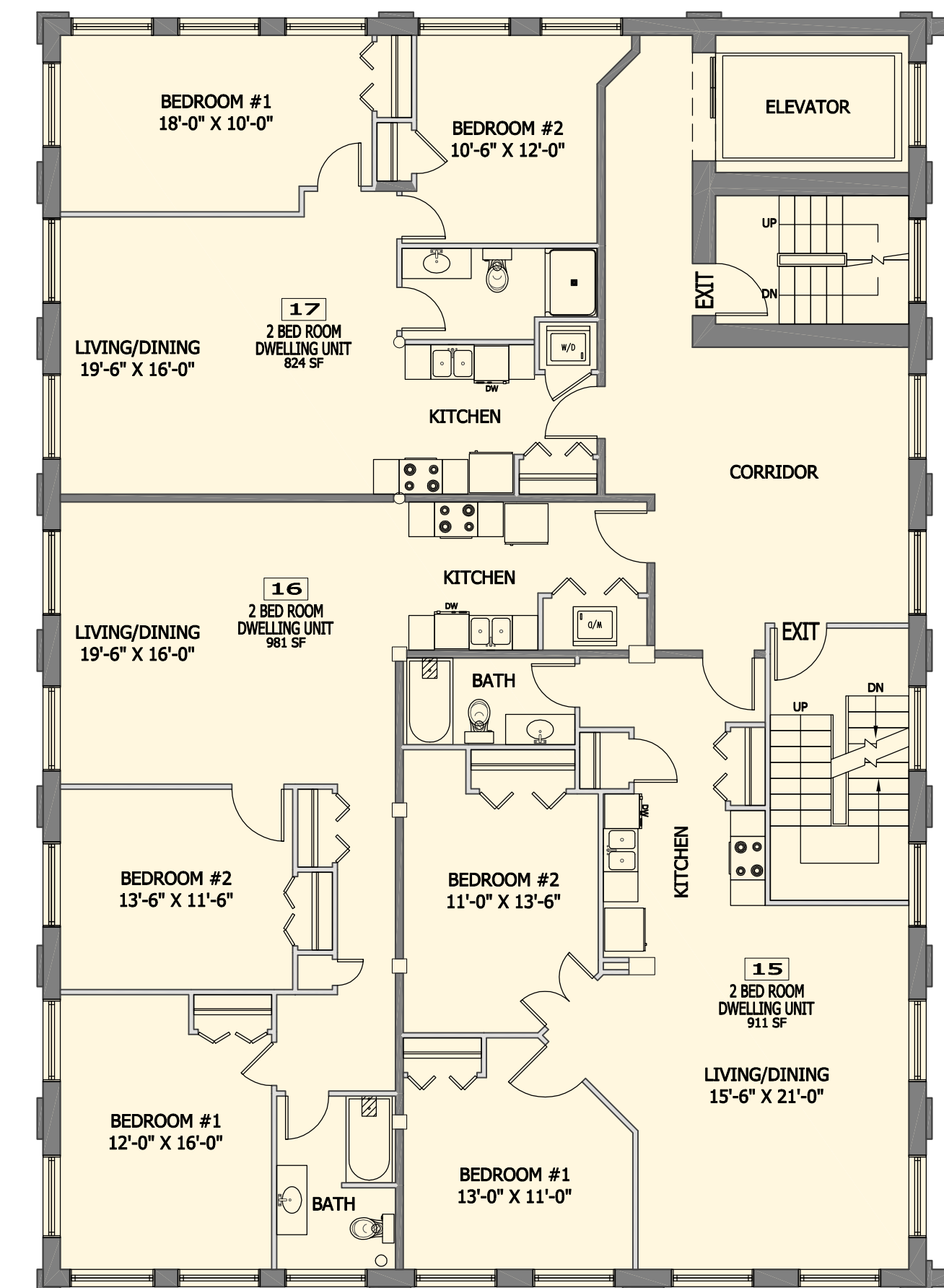
1 FIRST FLOOR TOWER  
18' x 10'



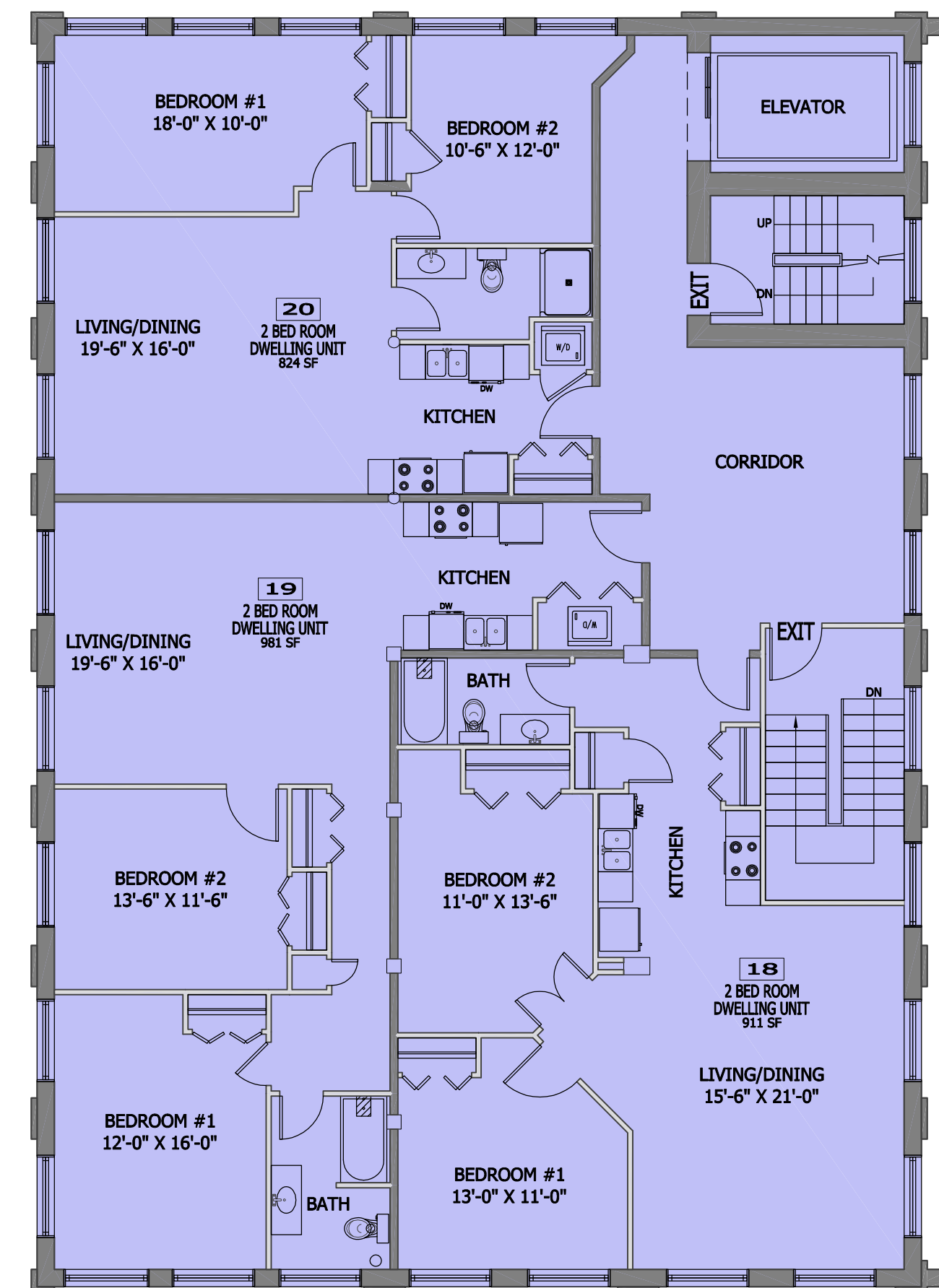
2 SECOND FLOOR TOWER  
18' x 10'



3 THIRD FLOOR TOWER  
18' x 10'



4 FOURTH FLOOR TOWER  
18' x 10'



5 FIFTH FLOOR TOWER  
18' x 10'



# Millport

1001 ISLINGTON ST.  
PORTSMOUTH, NH 03801