



# FOXGLOVE FARMHOUSE

## 051.124.v19 GR

Reverse plan available.

In addition to our Terms and Conditions (the "Terms"), please be aware of the following:

Artform Home Plans ("Artform") requires that our Drawings be built substantially as designed. Artform will not be obligated by or liable for use of this design with markups as part of any builder agreement. While we attempt to accommodate where possible and reasonable, and where the changes do not denigrate our design, any and all changes to Drawings must be approved in writing by Artform. It is recommended that you have your Drawing updated by Artform prior to attaching any Drawing to any builder agreement. Artform shall not be responsible for the misuse of or unauthorized alterations to any of its Drawings.



©2014-2021 Art Form Architecture, Inc.  
Foxglove Farmhouse 051.124.v19 GR

Width 58.00 FT

Depth 34.42 FT

Height 31.67 FT

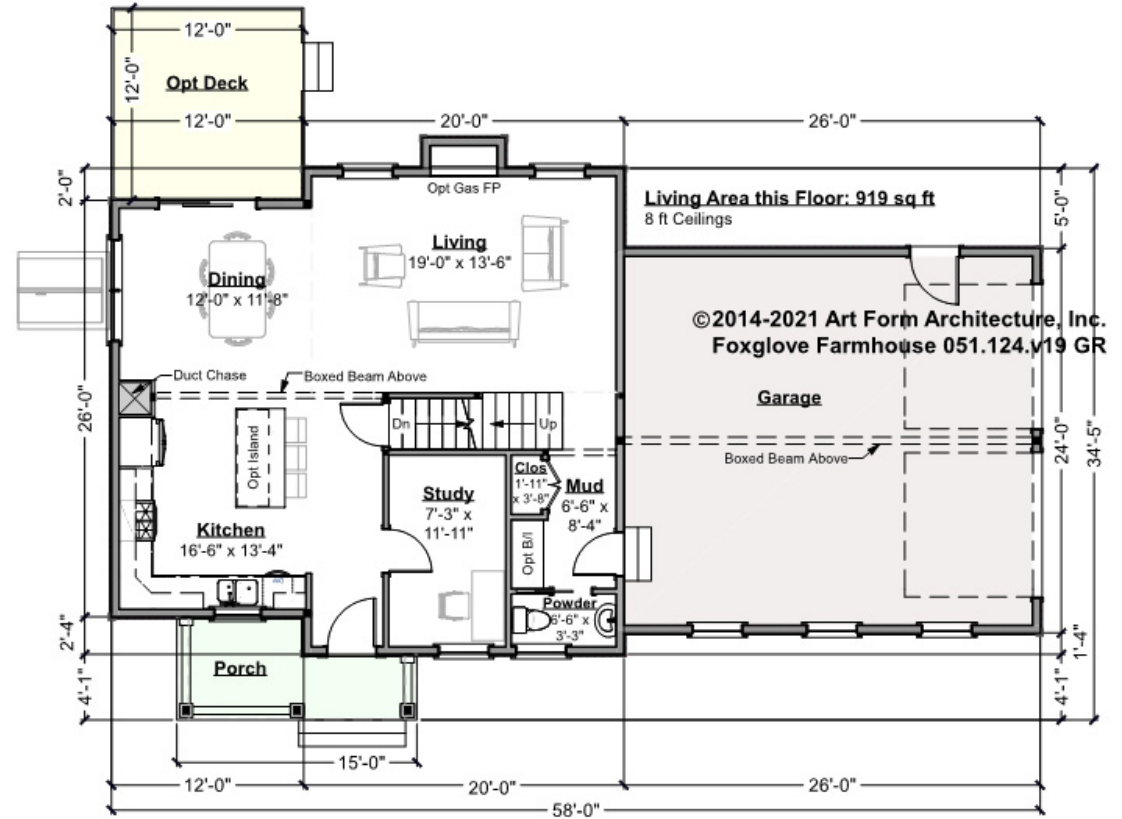
LIVING AREA		BEDROOMS		BATHROOMS	
	2192 FT		4		2.5
Main	1923 FT	Main	3	Main	2.5
Future	269 FT	Future	1	Future	0
2 <sup>nd</sup> Unit	0 FT	2 <sup>nd</sup> Unit	0	2 <sup>nd</sup> Unit	0



# FOXGLOVE FARMHOUSE - 1<sup>ST</sup> FLOOR

## 051.124.v19 GR

Some features shown are optional. Your Purchase & Sale Agreement governs, whether items are labeled "optional" in this document or not.



CLG HT SHOWN 8'-0"      CLG HT POSSIBLE 8'-0"

\* Major Change Fee, see website plan page for cost

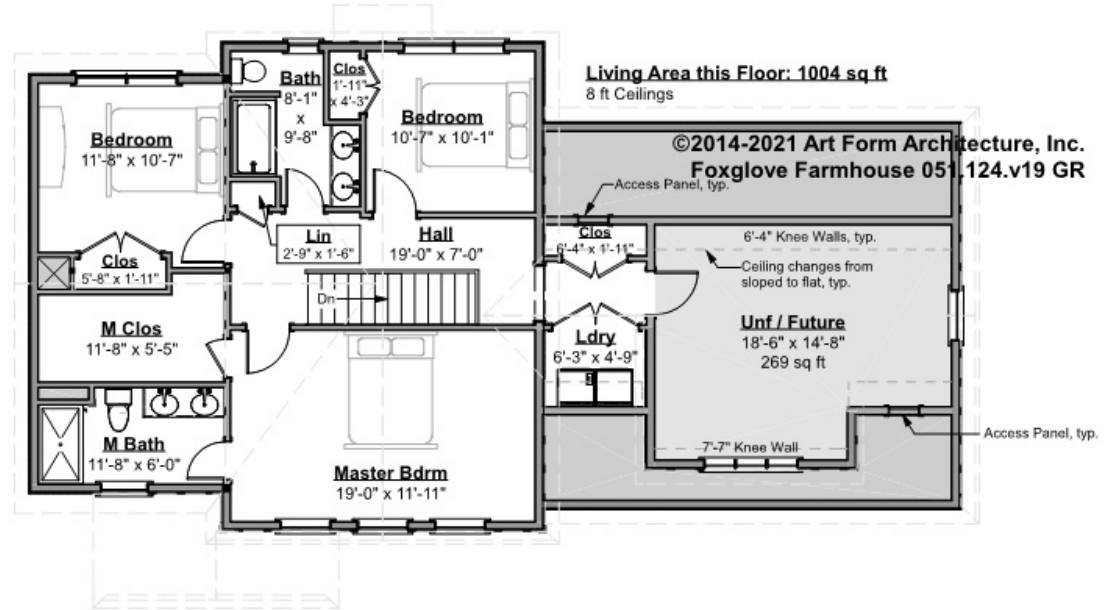
F1 LIVING AREA		F1 BEDROOMS		F1 BATHROOMS	
	919 <sup>FT</sup>		0		0.5
Main	919.00 <sup>FT</sup>	Main	0.00	Main	0.50
Future	0.00 <sup>FT</sup>	Future	0.00	Future	0.00
2 <sup>nd</sup> Unit	0.00 <sup>FT</sup>	2 <sup>nd</sup> Unit	0.00	2 <sup>nd</sup> Unit	0.00



# FOXGLOVE FARMHOUSE - 2<sup>ND</sup> FLOOR

## 051.124.v19 GR

Some features shown are optional. Your Purchase & Sale Agreement governs, whether items are labeled "optional" in this document or not.



CLG HT SHOWN 8'-0"      CLG HT POSSIBLE 9'-0"

\* Major Change Fee, see website plan page for cost

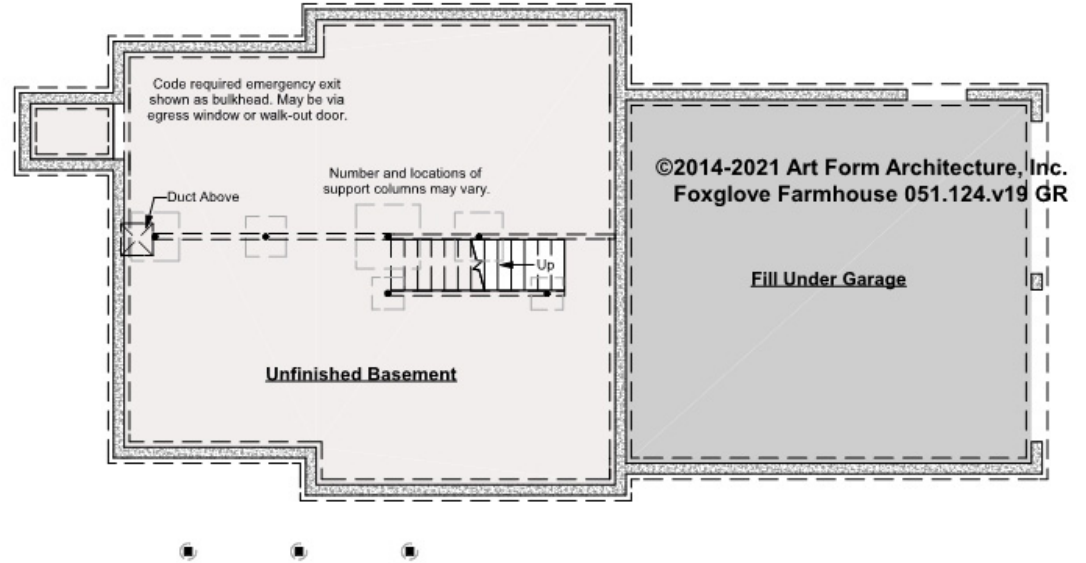
F1 LIVING AREA	1273 FT	F1 BEDROOMS	4	F1 BATHROOMS	2
Main	1004.00 FT	Main	3.00	Main	2.00
Future	269.00 FT	Future	1.00	Future	0.00
2 <sup>nd</sup> Unit	0.00 FT	2 <sup>nd</sup> Unit	0.00	2 <sup>nd</sup> Unit	0.00



# FOXGLOVE FARMHOUSE - BASEMENT

## 051.124.v19 GR

Some features shown are optional. Your Purchase & Sale Agreement governs, whether items are labeled "optional" in this document or not.



CLG HT SHOWN 7'-8"      CLG HT POSSIBLE 9'-0"

\* Major Change Fee, see website plan page for cost

F1 LIVING AREA		F1 BEDROOMS		F1 BATHROOMS	
	0 <sup>FT</sup>		0		0
Main	0.00 <sup>FT</sup>	Main	0.00	Main	0.00
Future	0.00 <sup>FT</sup>	Future	0.00	Future	0.00
2 <sup>nd</sup> Unit	0.00 <sup>FT</sup>	2 <sup>nd</sup> Unit	0.00	2 <sup>nd</sup> Unit	0.00



Art Form Architecture, Inc.

## FOXGLOVE FARMHOUSE - FRONT ELEVATION

051.124.v19 GR

Some features shown are optional. Your Purchase & Sale Agreement governs, whether items are labeled "optional" in this document or not.





Art Form Architecture, Inc.

## FOXGLOVE FARMHOUSE - RIGHT ELEVATION

051.124.v19 GR

—  
Some features shown are optional. Your Purchase & Sale Agreement governs, whether items are labeled "optional" in this document or not.



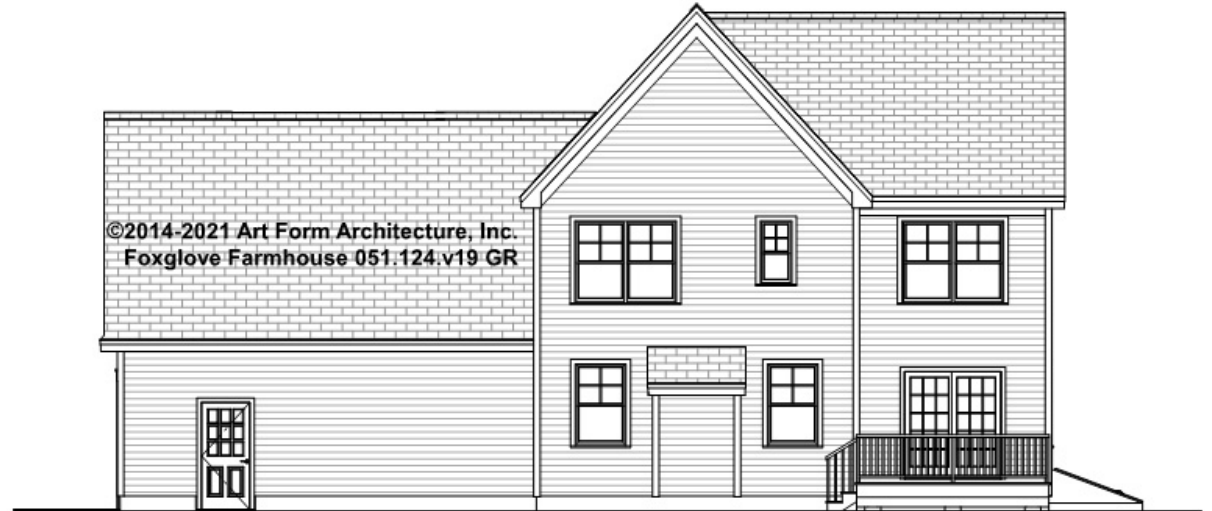


Art Form Architecture, Inc.

## FOXGLOVE FARMHOUSE - REAR ELEVATION

051.124.v19 GR

—  
Some features shown are optional. Your Purchase & Sale Agreement governs, whether items are labeled "optional" in this document or not.





Art Form Architecture, Inc.

## FOXGLOVE FARMHOUSE - LEFT ELEVATION

051.124.v19 GR

—  
Some features shown are optional. Your Purchase & Sale Agreement governs, whether items are labeled "optional" in this document or not.

