



Art Form Architecture, Inc.

HOPSCOTCH CLASSIC

408.124.v18 KL

In addition to our Terms and Conditions (the "Terms"), please be aware of the following:

Artform Home Plans ("Artform") requires that our Drawings be built substantially as designed. Artform will not be obligated by or liable for use of this design with markups as part of any builder agreement. While we attempt to accommodate where possible and reasonable, and where the changes do not denigrate our design, any and all changes to Drawings must be approved in writing by Artform. It is recommended that you have your Drawing updated by Artform prior to attaching any Drawing to any builder agreement. Artform shall not be responsible for the misuse of or unauthorized alterations to any of its Drawings.



Width 58.00 ^{FT}

Depth 32.00 ^{FT}

Height 25.16 ^{FT}

LIVING AREA	2014 ^{FT}
Main	1729 ^{FT}
Future	285 ^{FT}
2 nd Unit	0 ^{FT}

BEDROOMS	5
Main	3
Future	2
2 nd Unit	0

BATHROOMS	2.5
Main	2.5
Future	0
2 nd Unit	0

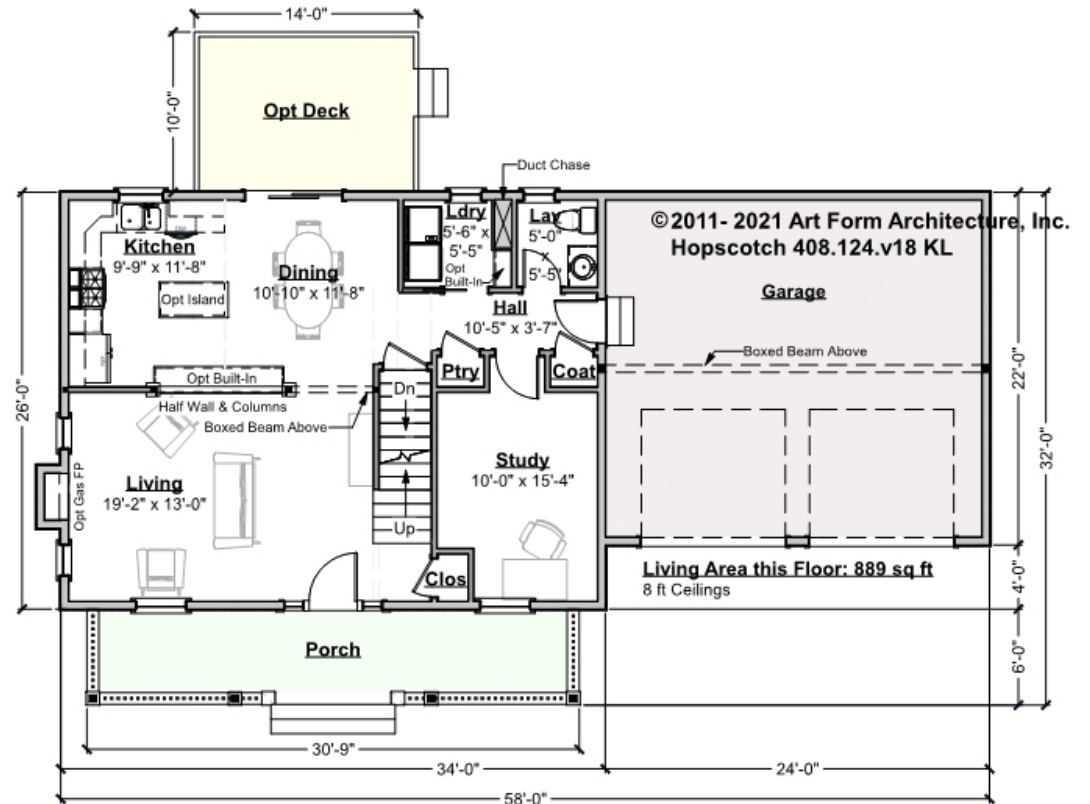


Art Form Architecture, Inc.

HOPSCOTCH CLASSIC - 1ST FLOOR

408.124.v18 KL

Some features shown are optional. Your Purchase & Sale Agreement governs, whether items are labeled "optional" in this document or not.



CLG HT SHOWN 8'-0"

CLG HT POSSIBLE 8'-0"

* Major Change Fee, see website plan page for cost

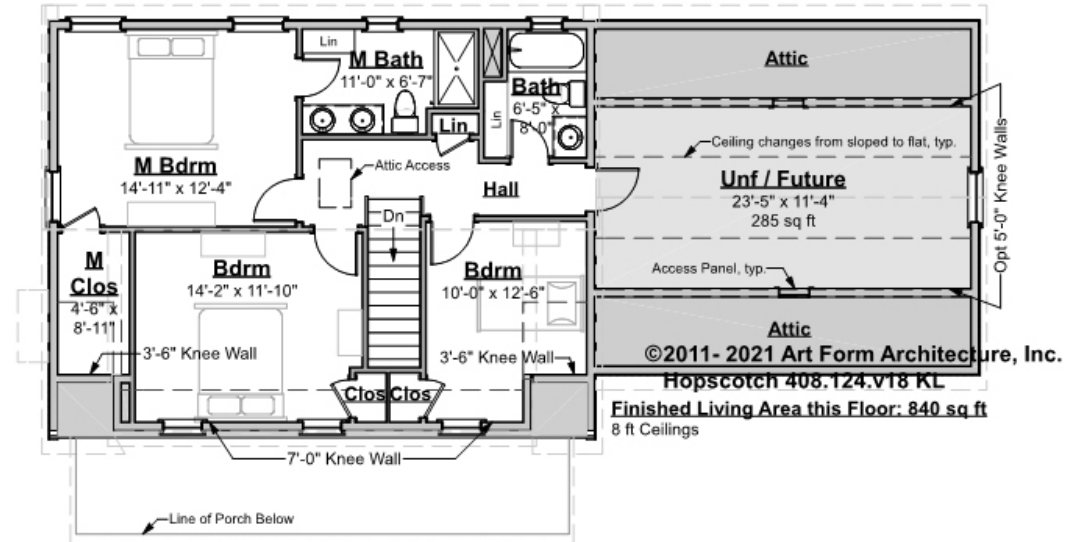
F1 LIVING AREA	889 ^{FT}	F1 BEDROOMS	1	F1 BATHROOMS	0.5
Main	889.00 ^{FT}	Main	0.00	Main	0.50
Future	0.00 ^{FT}	Future	1.00	Future	0.00
2 nd Unit	0.00 ^{FT}	2 nd Unit	0.00	2 nd Unit	0.00



HOPSCOTCH CLASSIC - 2ND FLOOR

408.124.v18 KL

Some features shown are optional. Your Purchase & Sale Agreement governs, whether items are labeled "optional" in this document or not.



CLG HT SHOWN 8'-0"

CLG HT POSSIBLE 9'-0"

* Major Change Fee, see website plan page for cost

F1 LIVING AREA	1125 ^{FT}	F1 BEDROOMS	4	F1 BATHROOMS	2
Main	840.00 ^{FT}	Main	3.00	Main	2.00
Future	285.00 ^{FT}	Future	1.00	Future	0.00
2 nd Unit	0.00 ^{FT}	2 nd Unit	0.00	2 nd Unit	0.00

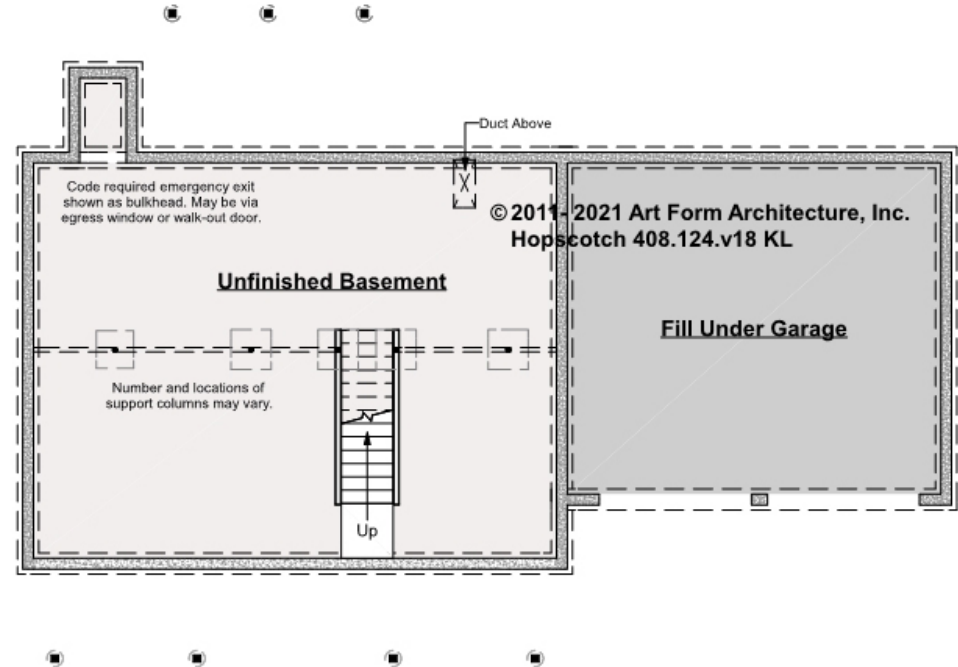


HOPSCOTCH CLASSIC - BASEMENT

408.124.v18 KL

Construction drawings show 9 ft foundation walls.

Some features shown are optional. Your Purchase & Sale Agreement governs, whether items are labeled "optional" in this document or not.



CLG HT SHOWN 8'-9"

CLG HT POSSIBLE 7'-8"

* Major Change Fee, see website plan page for cost

F1 LIVING AREA		0 FT	F1 BEDROOMS		0	F1 BATHROOMS		0
Main		0.00 FT	Main		0.00	Main		0.00
Future		0.00 FT	Future		0.00	Future		0.00
2 nd Unit		0.00 FT	2 nd Unit		0.00	2 nd Unit		0.00



Art Form Architecture, Inc.

HOPSCOTCH CLASSIC - FRONT ELEVATION

408.124.v18 KL

Some features shown are optional. Your Purchase & Sale Agreement governs, whether items are labeled "optional" in this document or not.



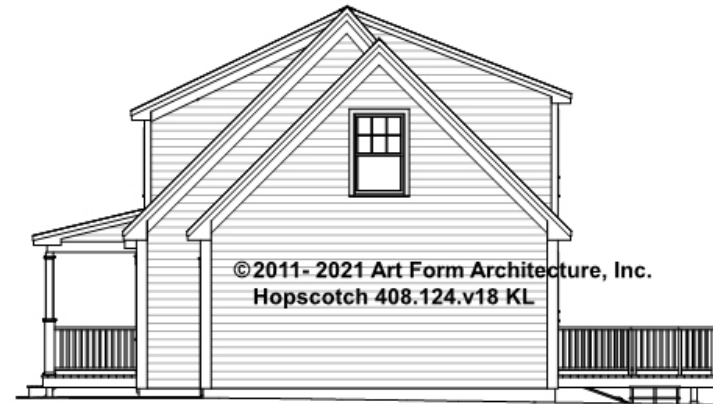


Art Form Architecture, Inc.

HOPSCOTCH CLASSIC - RIGHT ELEVATION

408.124.v18 KL

—
Some features shown are optional. Your Purchase & Sale Agreement governs, whether items are labeled "optional" in this document or not.



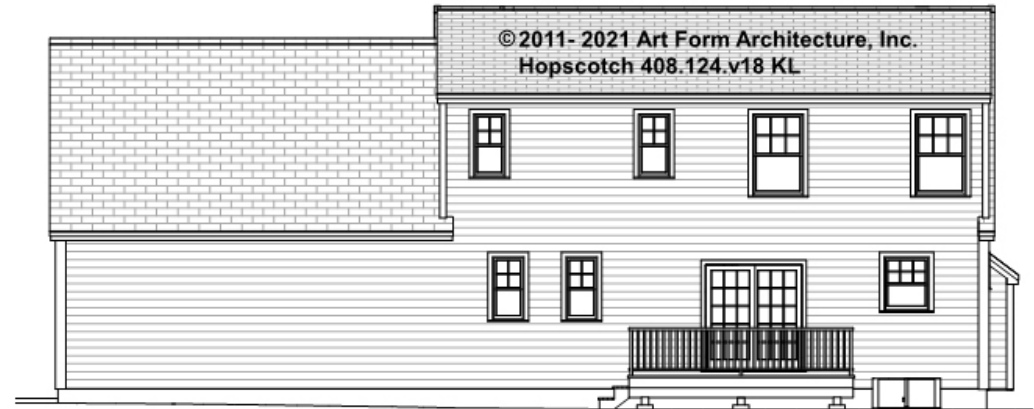


Art Form Architecture, Inc.

HOPSCOTCH CLASSIC - REAR ELEVATION

408.124.v18 KL

Some features shown are optional. Your Purchase & Sale Agreement governs, whether items are labeled "optional" in this document or not.





Art Form Architecture, Inc.

HOPSCOTCH CLASSIC - LEFT ELEVATION

408.124.v18 KL

—
Some features shown are optional. Your Purchase & Sale Agreement governs, whether items are labeled "optional" in this document or not.

