



Art Form Architecture, LLC

## FOXGLOVE FARMHOUSE

051.124.v22 GL

Reverse plan available.

—

In addition to our Terms and Conditions (the "Terms"), please be aware of the following:

Art Form Architecture, LLC ("Artform") requires that our Drawings be built substantially as designed. Artform will not be obligated by or liable for use of this design with markups as part of any builder agreement. While we attempt to accommodate where possible and reasonable, and where the changes do not denigrate our design, any and all changes to Drawings must be approved in writing by Artform. It is recommended that you have your Drawing updated by Artform prior to attaching any Drawing to any builder agreement. Artform shall not be responsible for the misuse of or unauthorized alterations to any of its Drawings.



Width 58.00 <sup>FT</sup>

Depth 34.42 <sup>FT</sup>

Height 31.67 <sup>FT</sup>

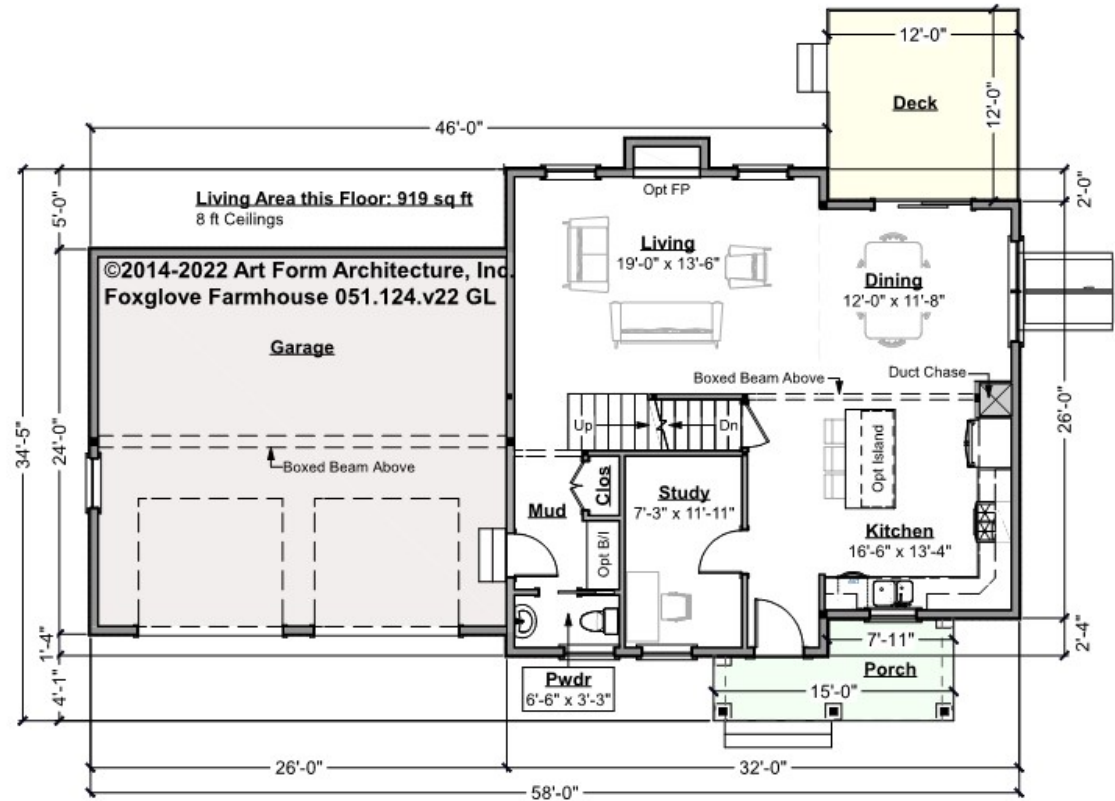
LIVING AREA		2202 <sup>FT</sup>	BEDROOMS		5	BATHROOMS		2.5
Main		2202 <sup>FT</sup>	Main		4	Main		2.5
Future		0 <sup>FT</sup>	Future		1	Future		0
2 <sup>nd</sup> Unit		0 <sup>FT</sup>	2 <sup>nd</sup> Unit		0	2 <sup>nd</sup> Unit		0



## FOXGLOVE FARMHOUSE - 1<sup>ST</sup> FLOOR

### 051.124.v22 GL

Some features shown are optional. Your Purchase & Sale Agreement governs, whether items are labeled "optional" in this document or not.



CLG HT SHOWN 8'-0"

CLG HT POSSIBLE 8'-0"

\* Major Change Fee, see website plan page for cost

F1 LIVING AREA		919 <sup>FT</sup>	F1 BEDROOMS		1	F1 BATHROOMS		0.5
Main		919.00 <sup>FT</sup>	Main			Main		0.50
Future		FT	Future		1.00	Future		
2 <sup>nd</sup> Unit		FT	2 <sup>nd</sup> Unit			2 <sup>nd</sup> Unit		



Some features shown are optional. Your Purchase & Sale Agreement governs, whether items are labeled "optional" in this document or not.



\* Major Change Fee, see website plan page for cost

Use of this document is governed by our **Terms and Conditions**, found on our website: <https://www.artform.us/terms-conditions/>

© 2014 Art Form Architecture, LLC. ALL RIGHTS RESERVED.

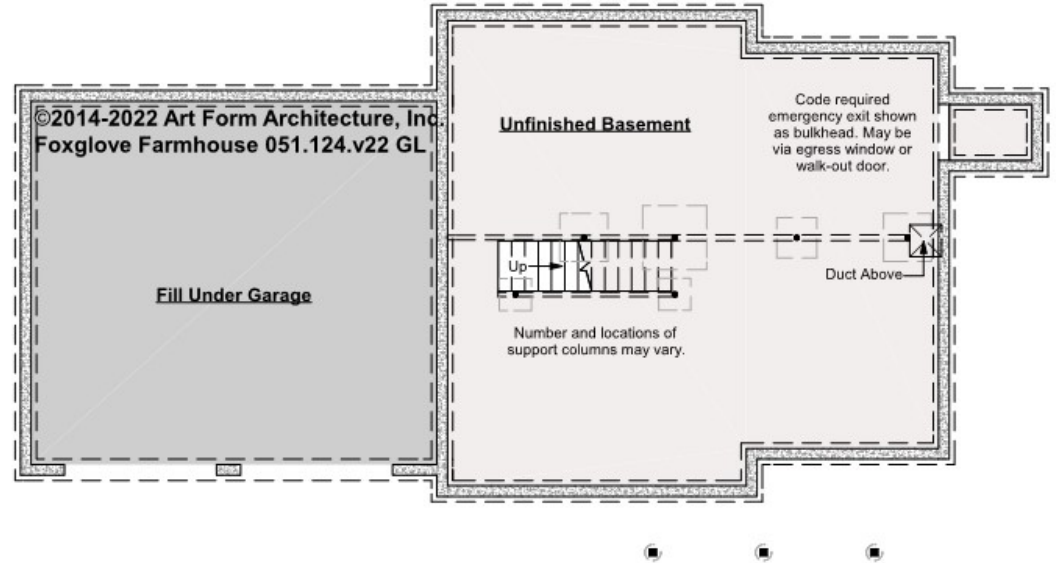
You may not build this Design without purchasing a License to Build (as defined in our Terms). Unauthorized changes are not permitted and violate copyright laws, which provide substantial penalties for infringement.



## FOXGLOVE FARMHOUSE - BASEMENT

### 051.124.v22 GL

Some features shown are optional. Your Purchase & Sale Agreement governs, whether items are labeled "optional" in this document or not.



CLG HT SHOWN 7'-8"

CLG HT POSSIBLE 9'-0"

\* Major Change Fee, see website plan page for cost

F1 LIVING AREA		0 FT	F1 BEDROOMS		0	F1 BATHROOMS		0
Main		FT	Main			Main		
Future		FT	Future			Future		
2 <sup>nd</sup> Unit		FT	2 <sup>nd</sup> Unit			2 <sup>nd</sup> Unit		



Art Form Architecture, LLC

## FOXGLOVE FARMHOUSE - FRONT ELEVATION

051.124.v22 GL

Some features shown are optional. Your Purchase & Sale Agreement governs, whether items are labeled "optional" in this document or not.





Art Form Architecture, LLC

## FOXGLOVE FARMHOUSE - RIGHT ELEVATION

051.124.v22 GL

—

Some features shown are optional. Your Purchase & Sale Agreement governs, whether items are labeled "optional" in this document or not.





Art Form Architecture, LLC

## FOXGLOVE FARMHOUSE - REAR ELEVATION

051.124.v22 GL

—  
Some features shown are optional. Your Purchase & Sale Agreement governs, whether items are labeled "optional" in this document or not.





Art Form Architecture, LLC

## FOXGLOVE FARMHOUSE - LEFT ELEVATION

051.124.v22 GL

—  
Some features shown are optional. Your Purchase & Sale Agreement governs, whether items are labeled "optional" in this document or not.





Art Form Architecture, LLC

## FOXGLOVE FARMHOUSE - REAR RENDER

051.124.v22 GL

—

Some features shown are optional. Your Purchase & Sale Agreement governs, whether items are labeled "optional" in this document or not.

